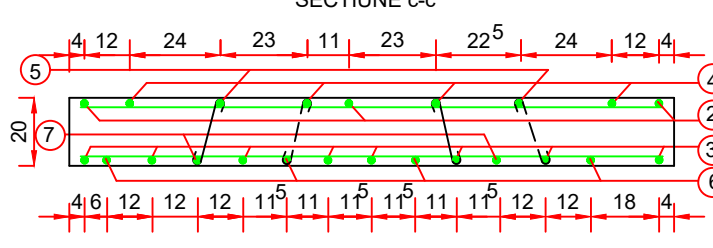
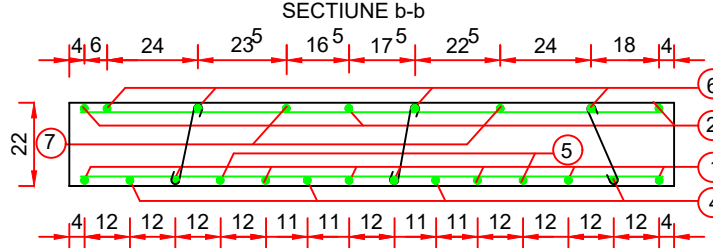
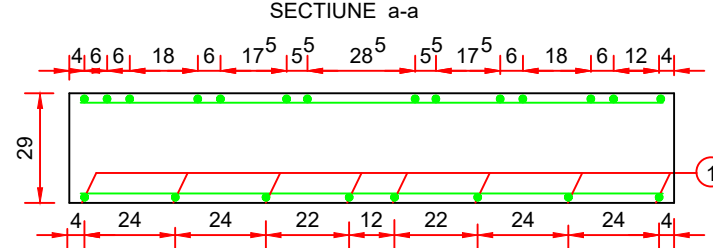
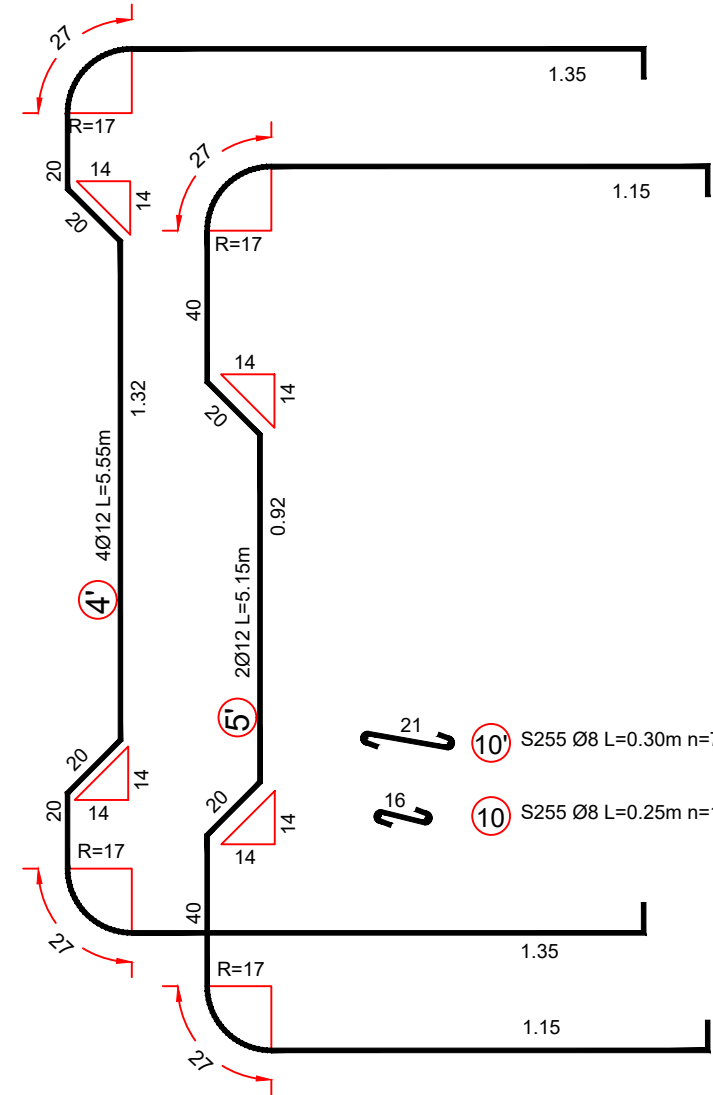
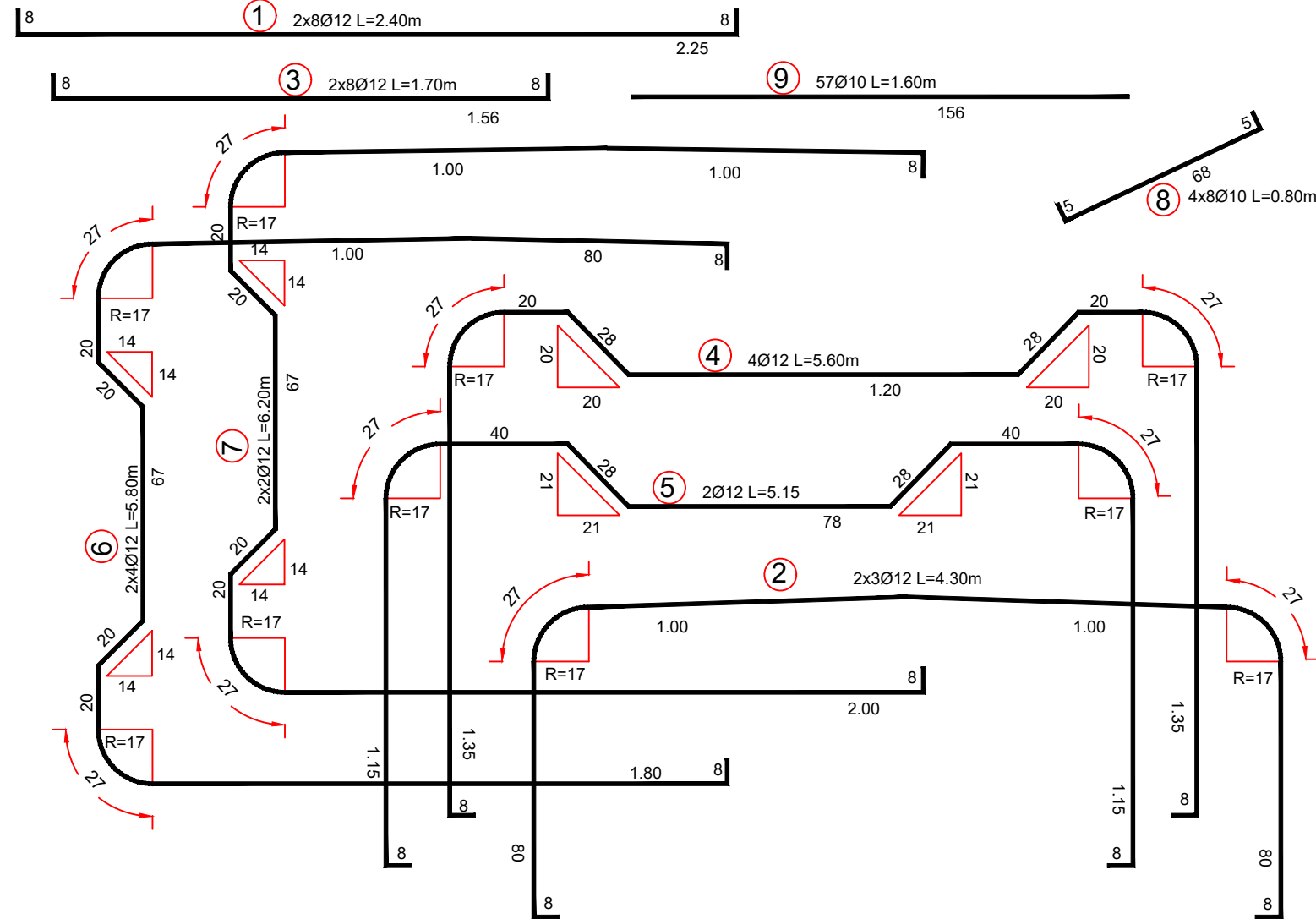
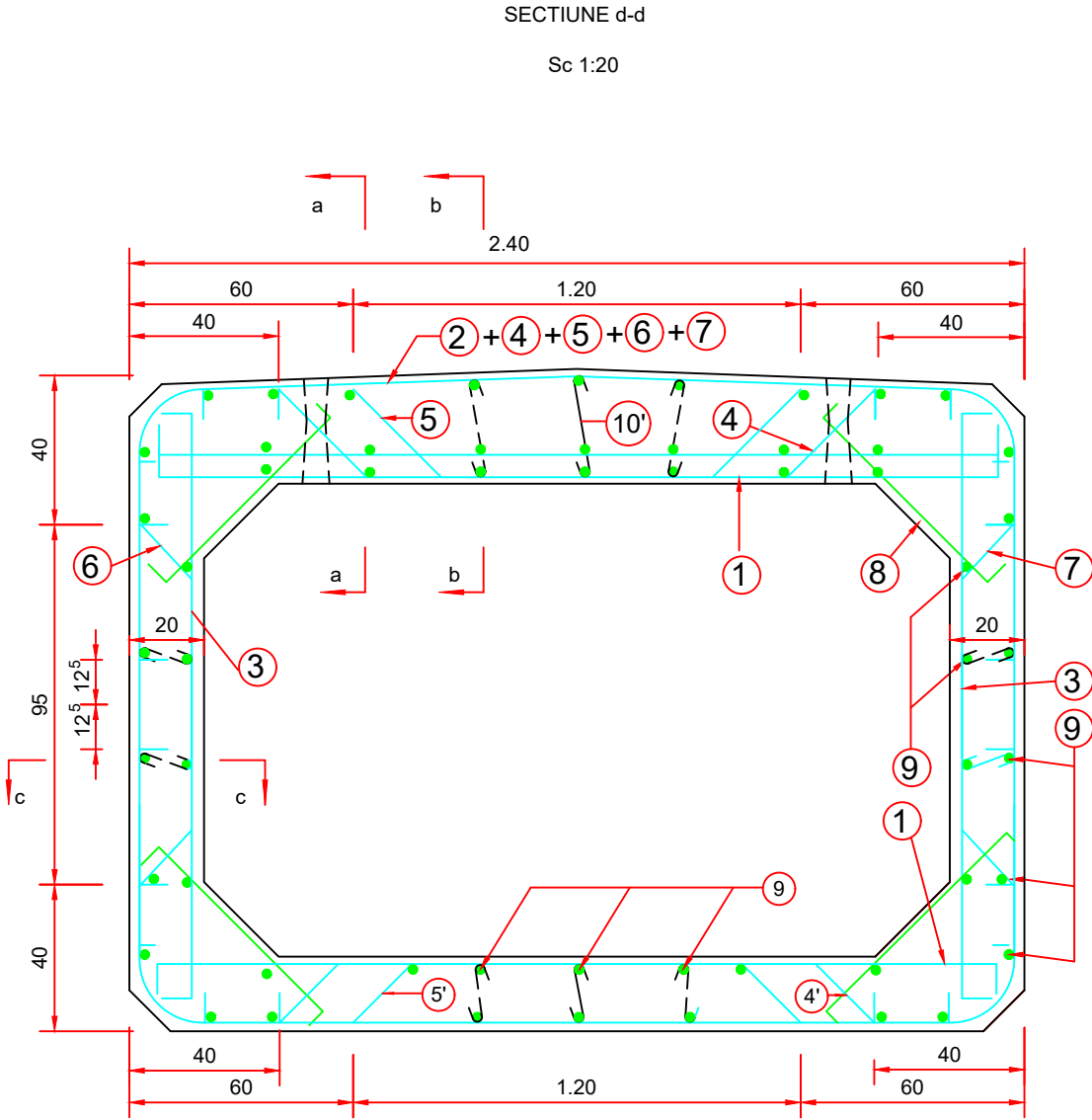
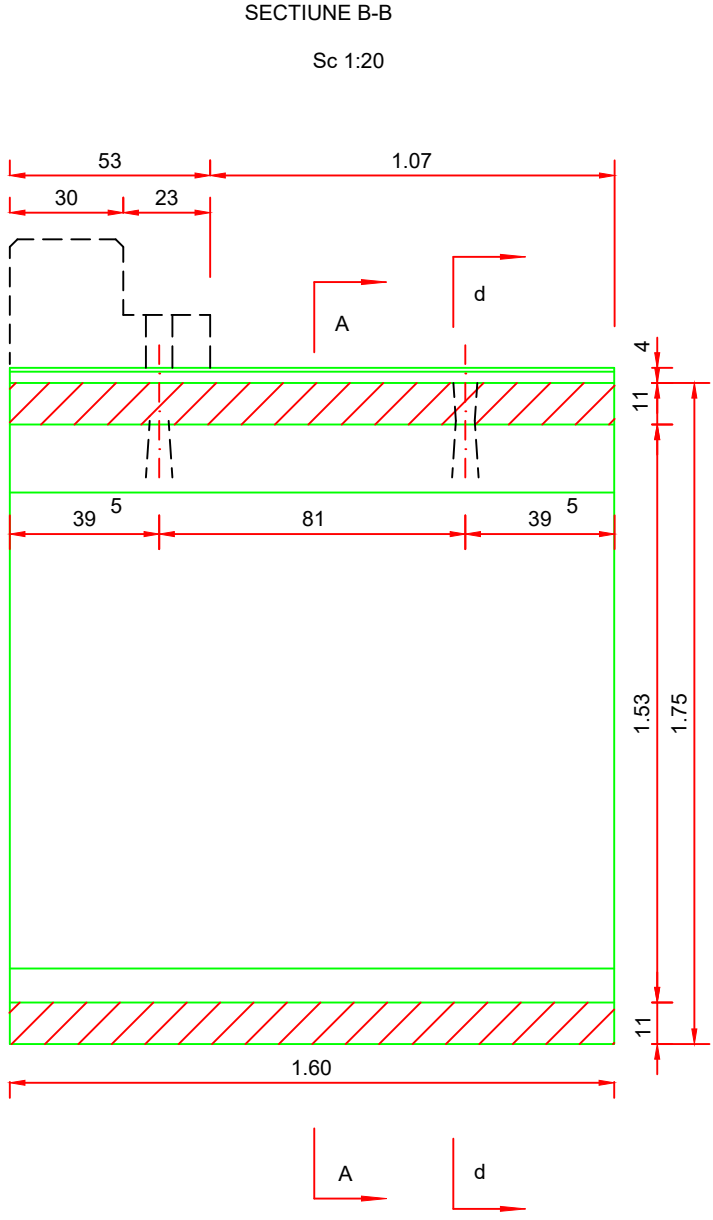
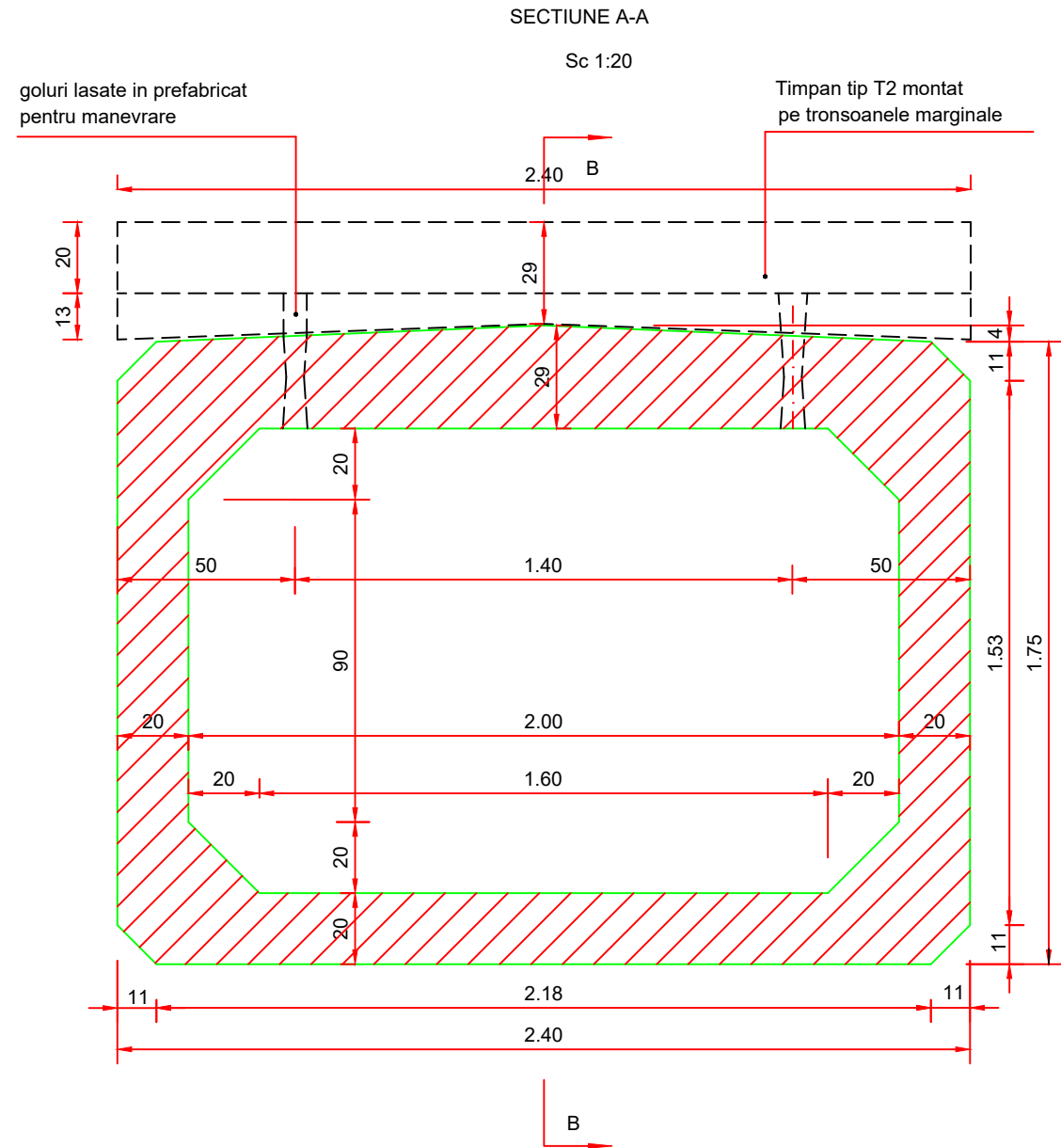


PLAN COFRAJ CADRU PREFABRICAT TIP C2"



EXTRAS DE ARMATURA CADRU PREFABRICAT TIP C2"

MARCA	DIAMETRU	NR. BUCATI	LUNGIME(m)/BUCATA	LUNGIMI(m)/DIAMETRU		
				BST 500B(C)		
				ø10	ø12	ø8
1	12	16	2.4		38.4	
2	12	6	4.3		25.8	
3	12	16	1.7		27.2	
4	12	4	5.6		22.4	
4'	12	4	5.55		22.2	
5	12	2	5.15		10.3	
5'	12	2	5.15		10.3	
6	12	8	5.8		46.4	
7	12	4	6.2		24.8	
8	10	32	0.8	25.6		
9	10	50	1.6	80		
10	8	13	0.25			3.25
10'	8	7	0.3			2.1
LUNGIMI TOTALE(m)				105.6	227.8	5.35
				/METRU	0.62	0.89
				/DIAMETRU	65.16	202.29
MASA(kg)				TOTALA	269.58	2.14

CARACTERISTICILE UNUI CADRU PREFABRICAT TIP C2"

C30/37	2.70mc
Greutate	6.50t
BST 500B(C)	269.58Kg
Cofraje	24.40mp

Caracteristicile betoanelor utilizate pentru
elemente prefabricate de podete:
Referinta la normativul NE 012-1:2007/standardul SR EN 206-1

- Clasa de rezistenta la compresiune
- Clasele de expunere (min)
- Dozaj minim de ciment (min)
- Tip ciment conf. SR EN 197-1:2002
- Raport apa/ciment (max)

C30/37
XC4+XD1+XF4
340 kg/mc
CEM I; SR I; I-A 52.5, 42.5;
CEM II: A/B-S, HIIA-S, A-LL;
0.5

INVESTITOR	PROIECTANT GENERAL	AMPLASAMENT	DENUMIRE PROIECT PROIECTARE SI EXECUTIE "VARIANTA DE OCULIRE TIMISOARA SUD" ELABORARE PROIECT TEHNIC REST DE EXECUTAT	FAZA PROIECT PROIECT TEHNIC REST DE EXECUTAT	Manager de Proiect ing. Silvan Moldovan Sef Echipa Proiectare ing. Raul Cocis Inginer Proiectant Poduri ing. Attila Takacs Inginer Proiectant Drumuri ing. Valentin Oaida	REVIZII			DENUMIRE PLANSA
						NR. REV.	DATA	SEMN.	
			NUMAR CONTRACT: 550/38/09.02.2023 NUMAR PROIECT : 556	Data : 03.2023 VERIFICATOR TEHNIC					DETALIU PLAN COFRAJ SI ARMARE CADRU PREFABRICAT C2" Scara : 1:20 NUMAR PLANSA 556-VOTM-DET-18